

NORTHERN IRELAND

"We were delighted with the level of participation in this research; the findings provide valuable evidence that will inform our new Irish Traveller Accommodation Strategy 2020-25." Elma Newberry, Assistant Director, Land and Regeneration

HOUSEHOLD PROFILES

Households surveyed: **540**

Numbers in households: **1,628**

Households with one or more members disabled: **65%**

EMPLOYMENT Household level

10% In work

29% Unemployed (not retired, disabled or homemakers)

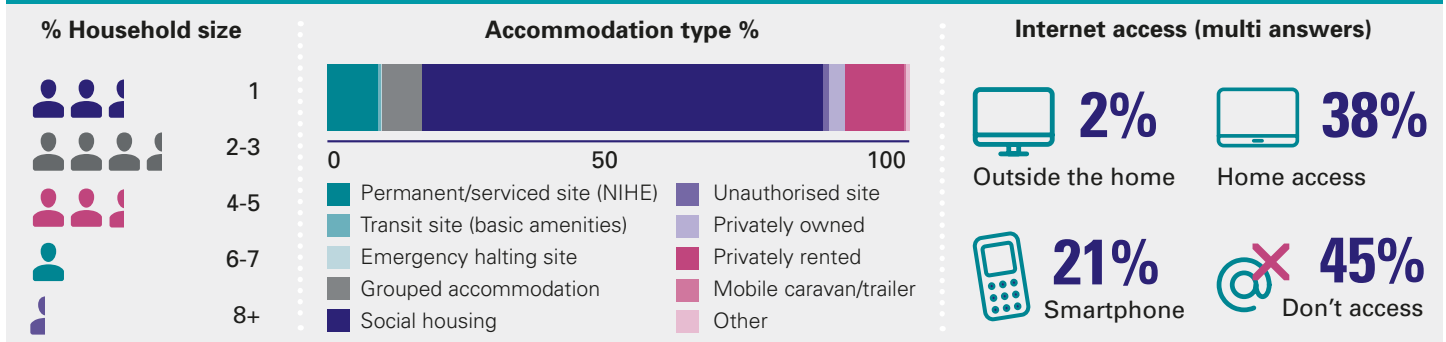
4% In further/higher education (excluding school aged)

7% Plan to travel in next 3 years

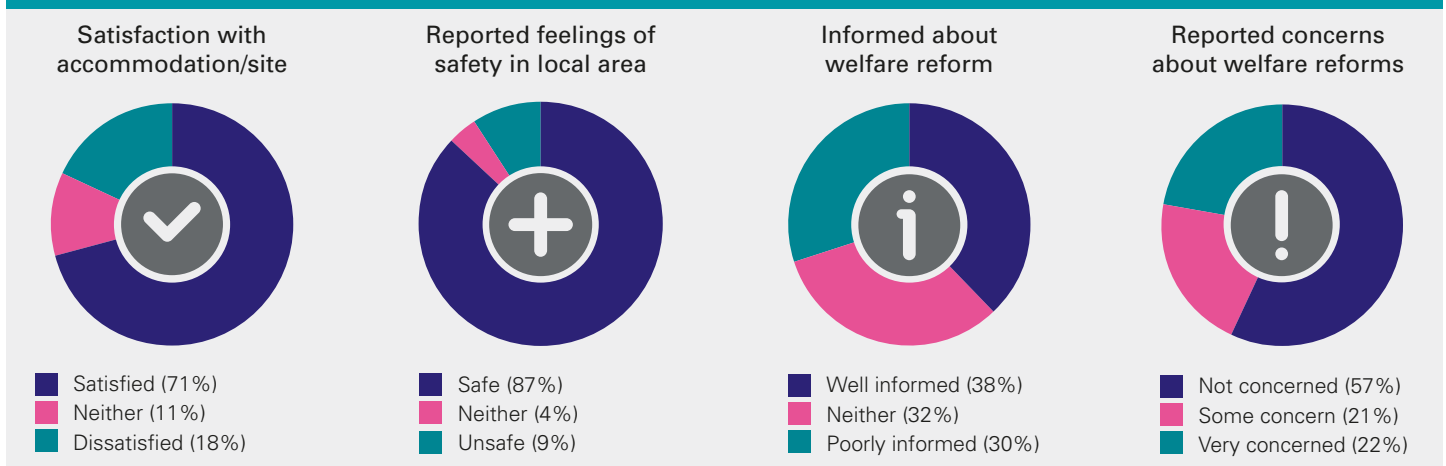
151

HOUSEHOLDS say they may seek new accommodation in the next 5 years

HOUSEHOLD INFORMATION



HOUSEHOLD ATTITUDINAL DATA



WHAT IS GOING WELL

"I'm very proud of my home, it's where I belong and my family are all around me... My neighbours are very good... It's my home and I wouldn't swap it... Near schools... It's a good location and I live beside my family... We like the site, clean and safe."

ROOM FOR IMPROVEMENT

"I'm in a wheelchair and I have stairs... We're overcrowded."

Due to figures being rounded to the nearest whole number percentages may not always add to 100