



# Mapping

Segregation in Northern Ireland

**Northern Ireland Housing Executive Estates Outside Belfast**



**Housing  
Executive**

Dr Ian Shuttleworth & Dr Chris Lloyd

# Mapping

## Segregation in Northern Ireland

**Northern Ireland Housing Executive Estates Outside Belfast**

A Report commissioned by the Northern Ireland Housing Executive  
from Queens University, Belfast.

QUB Research Team  
Dr Ian Shuttleworth and Dr Chris Lloyd  
Centre for Spatial Territorial Analysis Research,  
School of Geography, Queen University, Belfast

## **Contents**

Introduction	3
Data and Method	5
Results 1: Summary Statistics on Residential Segregation in 2001, outside Belfast	8
Results 2: Statistics by District Council	14
Conclusion	16
References	18
Appendices A: District Council Tables	19
B: Maps	46

## **Acknowledgements**

This research was commissioned and supported by the Northern Ireland Housing Executive.

The authors would like to thank the Housing Executive's Geographical Information Systems team led by Patrick McGarry for their invaluable support in geo-coding the boundaries of the housing estates.

Thanks are also due to Patrice Carmichael, the Housing Executive's Project Leader, for all her assistance and guidance.

## Introduction

It is important to understand more about residential segregation because of the wider context of social policy in Northern Ireland. One key element is the Shared Futures initiative produced by the Office of the First and Deputy First Minister (OFMDFM) in 2005 (A Shared Future 2005). One aim of public housing policy is to develop shared communities. Indeed, since 1998, the NIHE has been committed to promoting mixed housing where it is practicable, desirable and safe<sup>1</sup>. Pilot schemes, within this remit, have been brought forward, for instance, to increase integrated housing. Given this background it was desirable to scope the extent to which NIHE estates were segregated and to explore geographical variations in residential segregation between places.

In 2006 the Housing Executive therefore commissioned Dr Ian Shuttleworth and Dr Chris Lloyd of Queens University, Belfast, to undertake research on the changing levels of religious segregation on Housing Executive estates, using the newly available 2001 Census-based Grid Square Product. The following objectives were agreed for this piece of research:

1. To determine the level of residential segregation between Catholics and Protestants on NIHE estates using the 2001 Census of Population.
2. To determine the difference in segregation between NIHE and other estates.
3. To determine changes in segregation through time in NIHE and other estates.

The analysis for this first phase of the research focused on Belfast, where it is recognised that the delineation of the estate boundaries would be easier to undertake and where the usefulness of the Grid Square Product and the ensuing analysis could be tested. The final report entitled 'Mapping Segregation in Belfast, NIHE Estates' was published in September 2007. The following key findings emerged:

---

<sup>1</sup> [http://www.nihe.gov.uk/index/yn\\_home/community\\_cohesion/shared\\_future\\_housing.htm](http://www.nihe.gov.uk/index/yn_home/community_cohesion/shared_future_housing.htm)

1. Based on the 2001 Census, 91% of all Belfast NIHE estates were highly polarised, defined as having more than 80% of one community or less than 20% of one community in an estate.
2. NIHE estates appear to be polarised by both religion and community background, with very few mixed estates.
3. Catholics are the majority of NIHE tenants in Belfast (based on community background) making up 53% of tenants as against 43% of Protestants.
4. Looking at levels of segregation over time, while NIHE estates in 1971 were relatively polarised, this has increased over time, becoming more segregated particularly between 1971 and 1991. Segregation changed little between 1991 and 2001.
5. The number of Catholic occupants on NIHE estates has remained relatively constant between 1971 and 2001, while the number of Protestant occupants has declined.

The Housing Executive quickly confirmed that the findings were of considerable value both in informational and policy development terms, providing for the first time a robust evidence base for the level of segregation on its estates - in this case in Belfast.

As a result the same research team (Dr Shuttleworth and Dr Lloyd) was asked to undertake a further stage of analysis which applied the same analytical tool to census data from the rest of Northern Ireland. Some evidence had indicated that residential segregation was generally less marked in Housing Executive estates outside Belfast (Byrne et al 2006) and it had also been argued, in general, that Belfast was not necessarily typical of Northern Ireland (Poole and Doherty 1996). It was important to gather further evidence to support (or refute) this assumption and to be able to provide a full baseline picture for residential segregation in Northern Ireland in the social housing sector in 2001. The key aims of the second phase of the segregation research are therefore:

1. To determine the level of residential segregation between Catholics and Protestants on NIHE estates outside Belfast using 100m<sup>2</sup> population counts from the 2001 Census of Population.
2. To compare the difference in segregation in NIHE estates between (a) urban areas and (b) other spatial units commonly used to measure residential segregation.
3. To determine changes in residential segregation through time, if possible, in (a) NIHE estates outside Belfast; and (b) the urban areas in which they are located<sup>2</sup>.
4. To present a non-technical report outlining the main conclusions and the implications of the analysis.

As outlined by Shuttleworth and Lloyd (2007), the ability of the NIHE to undertake these analyses to date using its own data has been limited until now because the Housing Executive does not collect religion data on its tenants and Census information for spatial units small enough to capture the intricacies of housing estates has not been easily available. In any event, even if data on tenants had been available from the NIHE, a considerable proportion of its stock has passed into the private sector where this information is not available. However, the successful experience of using 100m grid square data in Belfast indicates how areas lying within NIHE estates can be demographically profiled using Census data. This report therefore extends the analysis reported by Shuttleworth and Lloyd (2007) to NIHE estates outside Belfast District Council (DC). It profiles the community and housing composition of estates outside Belfast DC by District Council (DC) area and calculates segregation indices for estates by DC area concentrating on the position in 2001.

### **Data and method**

The best available approach to estimate residential segregation on NIHE estates is to use data from the Census of Population as described by Shuttleworth and Lloyd (2007). The NI Grid Square Product drawn from the NI Census facilitates the analysis of residential segregation at a small spatial scale on housing estates by providing data for very small spatial units. Unique to Northern Ireland, this resource provides univariate counts for a wide variety

---

<sup>2</sup> In the event, this was impossible because of variability of the coverage of the 100m data beyond Belfast

of Census variables for 1971, 1981, 1991 and 2001 for 1km<sup>2</sup> cells (over all Northern Ireland) and 100m<sup>2</sup> cells for all NI in 2001 and for selected urban areas in earlier years. Full counts are not available for all variables for all areas. For cells with less than 8 households or 25 individuals, religion and community background counts, for instance, are suppressed to preserve confidentiality and only the total population and household counts are given. The cells provide a ready-made geography for analysis. The 1km grids are of questionable value for our present purpose because they are generally too coarse for the analysis of housing estates that may be geographically small. However, the 100m<sup>2</sup> counts can capture detail at a finer spatial scale in urban areas, so these data are used for this report.

The analysis is restricted at the moment to 2001 because the 100m statistics covered a far greater geographical area for that year than for earlier Censuses. In 2001, for example, the 100m<sup>2</sup> grid data covers all NI, both urban and rural, and as a One Number Census (ONC) product the population totals for all 100m<sup>2</sup> grids sum to published NI totals. It is therefore possible to provide data for quite small urban areas. However, in 1991, 100m<sup>2</sup> counts are not available for all areas but are restricted to certain urban locations covering just a subset of the NI population. In 1971 there are again 100m<sup>2</sup> counts for urban areas but the geographical coverage of the 100m<sup>2</sup> grids differs from that for 1991, perhaps because of differences in the definition of 'urban' or inaccuracies in coding the geographical coordinates of 100m<sup>2</sup> cells in earlier years. After examination, this meant that analyses through time were not feasible outside Belfast because of the sparseness of 100m data beyond the built-up area of Belfast.

The estate boundaries were provided by NIHE and describe estates boundaries as of 2001. In 2002, the NIHE commissioned an external GIS data capture organization to digitize the boundaries of all Housing Executive estates. The boundaries were based on the locations of all properties on the corporate address management database PRAWL (Property Record, Allocations and Waiting List). These address locations referenced all sold, tenanted and void NIHE properties and were already captured in GIS format as an XY

point coordinate. Estate codes and estate names were attached to each address point and the estate polygons were digitized based on these characteristics.

The process that was adopted to link 100m<sup>2</sup> cells to NIHE estates was to allocate a 100m<sup>2</sup> cell to an estate if its centroid fell within the boundary of that estate. For practical purposes this method of matching the 100m data to NIHE estate boundaries was likely to be sufficient but there could be a small minority of cases where population from a 100m<sup>2</sup> cell is not allocated to an estate because its centroid lies outside the estate boundaries despite a substantial part of the cell lying within the estate. The findings should therefore be taken as showing overall patterns, trends, and structures. Experience of similar exercises, however, suggests that these problems are marginal especially in comparison with other sources of error (eg responses and non-responses to the religion question) and that the spatial linkage procedure is adequate for purpose. Not all NIHE estates outside Belfast were included in the analysis. NIHE defined 425 estates outside Belfast. However, census data with religion/ community background information was obtained for 366 out of the 425 because some estates did not intersect with a 100m<sup>2</sup> cell (see above) and also because some 100m<sup>2</sup> cells had low population or household counts and data on religion and community background was suppressed to maintain confidentiality.

At this stage it is worthwhile to make some general comments about the descriptive statistics that are presented later. First, the percentages calculated and presented on religion in later tables in the body of the report and in appendices use the whole population as the base. Second, following this procedure, no attempt is made to attribute the 'not knows' and 'not stated' to either the Protestant or Catholic groups (the 2001 community background variable to some extent does this). There were several reasons for this. Prime among these was that the data recorded by the Census represents the way that people report their own identity. Also, the 'true' religious composition of the population can never be known. Various statistical methods can be used to allocate individuals to one group or the other but these methods can always be challenged. Moreover, there are limits to the extent to which the labels 'Catholic' or 'Protestant' can adequately capture complex political and social identities.



Finally, population and household totals in 2001 do not match the sum of individuals by religion or households across tenure types. This is because of the process of small cell adjustment (for reasons of confidentiality) in which small counts are modified so they are not disclosive. This means that population and household totals vary between Census tables as well as not always being internally consistent. To avoid grand totals being inconsistent with internal summations, grand totals have therefore been replaced by sum totals where necessary.

### **Results I: Summary statistics on residential segregation in 2001 outside Belfast**

Table 1 presents information on residential segregation across NIHE estates within district councils. The index used is D - the index of dissimilarity. This is one of the most widely used measures of segregation. D indicates the total differences between the spread of the two population groups over all of the areal units - in this case NIHE estates; it is given by:

$$D = 0.5 \times \sum_{i=1}^n \left( \left| \frac{x_i}{X} - \frac{y_i}{Y} \right| \right)$$

where  $x_i$  and  $y_i$  are counts of population in two groups (here, Catholics and Protestants) for areal unit  $i$  and there are  $n$  units.  $X$  and  $Y$  are the total population counts across the whole of the study area.  $D$  takes a value between 0 and 1 where a large value implies a high degree of segregation. The indicator is calculated for religion ( $D_r$ ) and community background ( $D_c$ ). The two groups in the calculation were defined as 'Catholics' compared with 'Others' (Protestant denominations plus Other Christians - in practice Protestants). Those with other religions and non-responders to the religion question were excluded as were those who either did not state that they were or who were not attributed as either a Catholic or a Protestant. Belfast District Council, on which Shuttleworth and Lloyd (2007) earlier reported, is included for context.

**Table 1: Indices of dissimilarity (D) and percentage Catholic (C) and Protestant (P) by district council; r is religion, c is Community Background.**

Name	Dr	Dc	C%r	P%r	C%c	P%c
Antrim	0.45	0.40	26.0	51.1	30.9	63.0
Ards	0.30	0.24	4.8	70.0	7.7	87.2
Armagh	0.81	0.75	65.2	24.5	70.7	28.5
Ballymena	0.59	0.54	19.1	62.6	22.2	73.9
Ballymoney	0.19	0.18	14.4	70.9	16.8	81.2
Banbridge	0.21	0.20	38.2	49.7	41.4	56.8
Belfast	0.94	0.90	5.7	71.4	7.0	86.5
Carrickfergus	0.31	0.30	1.1	79.4	2.5	93.3
Castlereagh	0.42	0.23	22.9	61.2	25.9	71.0
Coleraine	0.24	0.21	44.5	46.3	48.1	49.7
Cookstown	0.83	0.82	49.4	39.2	53.2	44.8
Craigavon	0.91	0.88	81.9	11.3	86.7	12.6
Derry	0.87	0.83	71.6	13.7	80.1	18.4
Down	0.67	0.57	43.8	45.4	48.7	49.4
Dungannon	0.90	0.87	67.6	21.3	73.3	25.3
Fermanagh	0.50	0.45	22.3	60.8	26.5	70.2
Larne	0.18	0.16	44.1	44.2	48.5	50.0
Limavady	0.20	0.21	43.0	40.9	47.8	49.2
Lisburn	0.82	0.78	45.2	46.0	48.1	50.3
Magherafelt	0.31	0.27	74.7	15.8	82.6	15.8
Moyle	0.26	0.30	84.1	5.7	91.2	7.8
Newry and Mourne	0.64	0.50	8.9	71.4	10.6	85.3
Newtownabbey	0.79	0.71	4.7	64.2	7.4	84.1
North Down	0.26	0.15	67.9	20.9	74.4	24.2
Omagh	0.75	0.72	88.8	4.2	95.5	4.0
Strabane	0.41	0.48	26.0	51.1	30.9	63.0

The table shows levels of segregation within each DC. These are not uniformly high across NI, ranging from 0.94 in Belfast to 0.18 in Larne (for religion) and 0.90 in Belfast to 0.15 in North Down (community background). Belfast might therefore be considered to be atypical to some extent and analyses restricted to Belfast might therefore

overestimate the degree of segregation on NIHE estates more if generalised in the absence of other evidence. However, Belfast DC is not alone in having high levels of residential segregation. Using religion it is followed by Craigavon, Dungannon, Derry, Cookstown and Lisburn; and Armagh, Newtownabbey and Omagh are all more segregated than the figure for NI as a whole (Shuttleworth and Lloyd 2008). The same approximate ranking is apparent when using community background. When mapped (see Maps 1 and 2), high levels of segregation are apparent in Belfast, Derry and Mid Ulster. Conversely, there are lower relative levels of segregation in Larne, Ballymoney, Limavady, Banbridge, Coleraine, Ards, North Down and Moyle. This indicates that levels of residential segregation, as measured by *D*, are variable across NI. NIHE estates in some DCs appear to be 'mixed' whereas in others segregation is moving towards the end of the scale where it is very nearly complete. Derry and Lisburn, in particular, have large NIHE estates so despite the low levels of segregation in some places it is tempting to conclude that the numbers and proportions of individuals and households in highly segregated areas outside Belfast are relatively high.

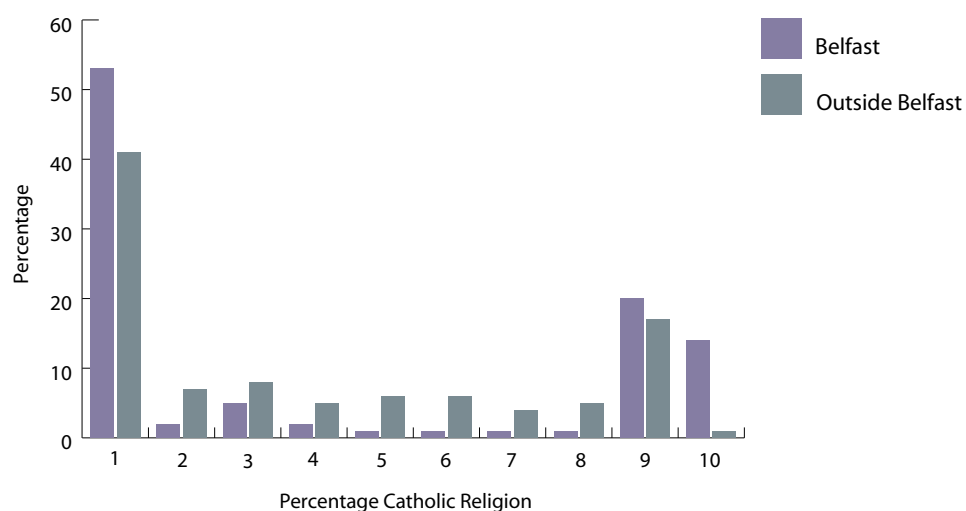
This is examined in Table 2 where the numbers and proportions of individuals and households outside Belfast who live on estates that are 80% or more Catholic or Protestant (by religion and community background) and 20% or less Catholic or Protestant (by religion and community background) are presented. The table shows that between a third and a half of people and households outside Belfast live within NIHE estates that could be considered as being highly polarised depending on the selection criterion. These findings can directly be compared with those of Shuttleworth and Lloyd (2007) on Belfast as the same thresholds to define 'polarisation' were used. The comparison suggests that the levels of segregation as measured by the proportion of households living in areas more than 80% (or less than 20%) of one community or another is less than is seen in Belfast when all estates outside Belfast are taken together, and that Belfast does not represent all of Northern Ireland. However, it is worth noting that these general observations conceal some important detail. Belfast is closer to some council areas (eg Derry and Dungannon) than others in its levels of segregation whilst there appear to be other places that are somewhat less segregated (eg Fermanagh) that seem to have lower levels of segregation.

**Table 2: People and households in polarised areas (Belfast and Outside Belfast)**

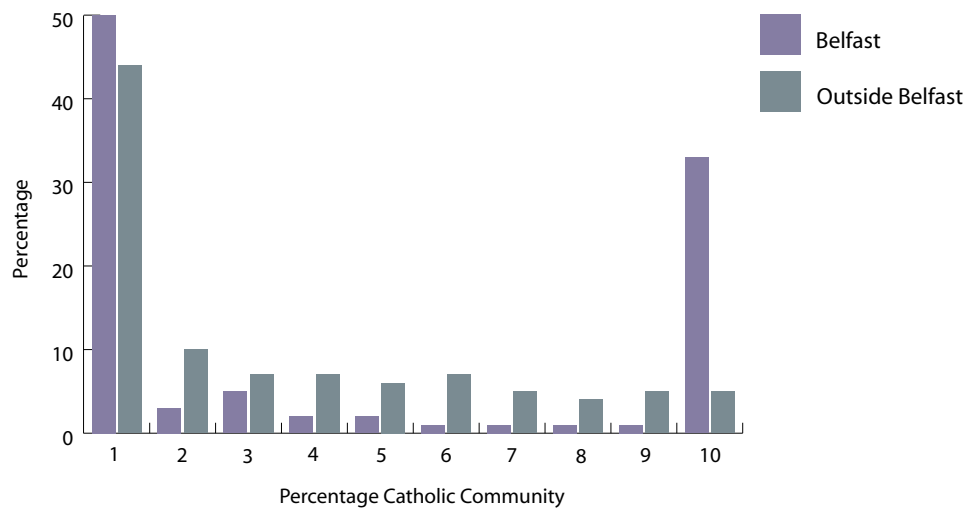
	Belfast				Outside Belfast			
	People	Households	People (%)	Households (%)	People	Households	People (%)	Households (%)
More than 80% Cath (Rel)	32,861	11,704	50.18	43.23	90,008	31,270	36.55	31.38
More than 80% Prot (Rel)	8,638	3,930	13.19	14.52	36,804	16,331	14.94	16.39
Less than 20% Cath (Rel)	29,029	13,836	44.32	51.11	113,415	51,009	46.05	51.18
Less than 20% Prot (Rel)	34,403	12,331	52.53	45.55	97,940	34,421	39.77	34.54
More than 80% Cath (Com)	33,788	12,062	51.59	44.56	94,435	32,964	38.34	33.08
More than 80% Prot (Com)	28,184	13,384	43.03	49.44	104,617	47,061	42.48	47.22
Less than 20% Cath (Com)	28,584	13,585	43.65	50.18	110,984	49,892	45.06	50.06
Less than 20% Prot (Com)	34,403	12,331	52.53	45.55	96,006	33,624	38.98	33.74
<b>Total</b>	<b>65,492</b>	<b>27,072</b>			<b>246,290</b>	<b>99,661</b>		

A similar point is made when the histograms in Figures 1 through 4 for all NIHE estates outside Belfast are compared with those for Belfast in 2001 in Shuttleworth and Lloyd (2007). There is a high proportion of estates in Classes 9 and 10 - 80% or more of the category being measured (eg more than 80% Catholic) - and Classes 1 and 2 - 20% or less of the category being measured (eg less than 20% Catholic) - as might be expected. However, where the histograms differ from those seen in Belfast is that there are more estates in the middle classes. The 'middle ground' for all NIHE estates outside Belfast, as a whole, is less eroded than that seen in Belfast DC suggesting that there is more demographic mixing outside Belfast in some places.

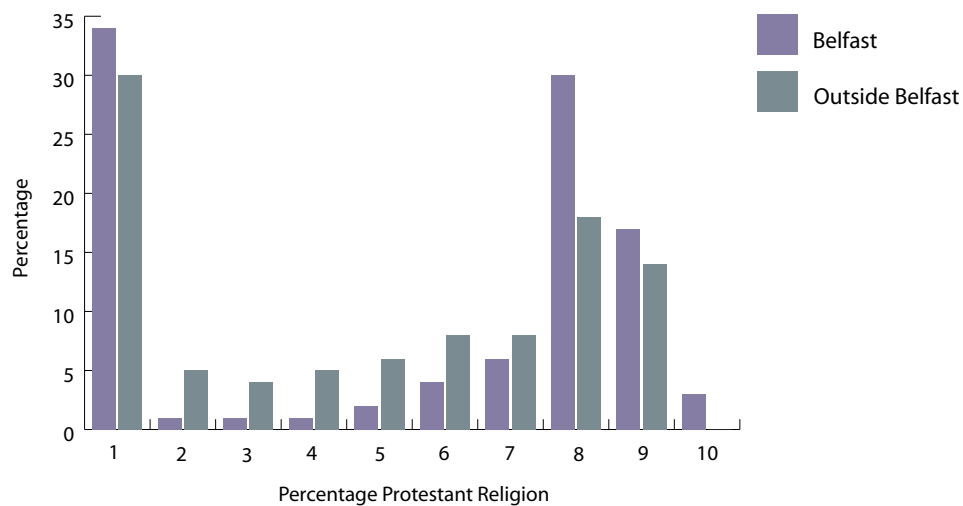
**Figure 1: Histogram of NIHE Estates (Belfast and outside Belfast) by Percentage Catholic (Religion) 2001**



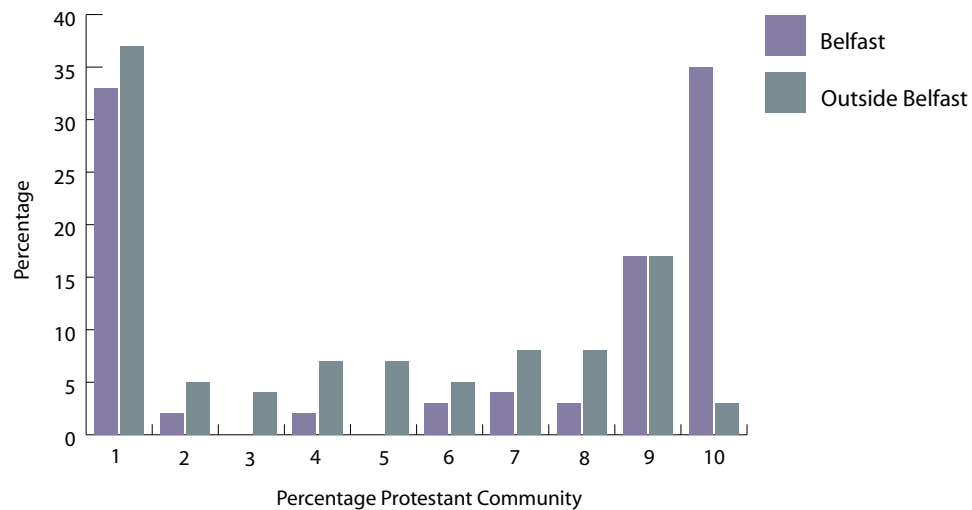
**Figure 2: Histogram of NIHE Estates (Belfast and outside Belfast) by Percentage Catholic (Community Background) 2001**



**Figure 3: Histogram of NIHE Estates (Belfast and outside Belfast) by Percentage Protestant (Religion) 2001**



**Figure 4: Histogram of NIHE Estates (Belfast and outside Belfast) by Percentage Protestant (Community Background) 2001**



## Results II: Statistics by District Council

In Appendix A full tables on the demographic and housing tenure profiles of the areas overlain by NIHE estates are provided by district council. There are 25 tables - one for each DC outside Belfast - so it is not intended to discuss each table one-by-one for reasons of space and repetition. However, general features will be drawn out to offer comment on the segregation analysis developed above. One feature that is apparent from inspection of the tables is that the religious composition of NIHE estates often reflects the religious make-up of each district council area. NIHE estates in Castlereagh, for instance, are largely Protestant as is the population of that area whereas estates in Derry tend to be Catholic.

Paradoxically, using D, NIHE estates in some DCs sometimes appear to have low levels of segregation when, if one examines population composition the estates appear anything but 'mixed' (eg with small Catholic minorities and large Protestant majorities). This is because of the statistical properties of D which measures unevenness between estates and as long as a minority is evenly distributed between estates within a DC, D is low. Castlereagh in Map 3 (and

also the table in Appendix A) is a good example of this where a small minority of Catholics evenly spread across estates within this DC lead to relatively low levels of D. North Down is also a good example of this type of population distribution. On the other hand, there are estates in some district councils which have low levels of D but which might be also described as being mixed in that their religious balance is more equal. Antrim, Ballymena and Ballymoney are district councils of this type (see Map 4, Ballymena and the Ballymena tables in Appendix A). There are other district councils which have high values of D such as Dungannon, Derry and Cookstown. Here there are uneven population distributions across estates with some being highly Catholic and some highly Protestant (see Map 5, Derry and the appropriate tables in Appendix). Care must therefore be taken in the interpretation of D, and reference to the religious composition of estates by DC is useful in understanding D more fully. Residential segregation (and mixing) is multidimensional and sometimes is not susceptible to easy measurement or the statistics require careful interpretation with regard to the wider context.

A number of reasons can be suggested for these patterns. The higher levels of segregation in Belfast, Derry and mid Ulster might in part be explained in terms of the history of the troubles in these places. All these areas were focuses for violence and had a history of territoriality which had been shaped by sectarianism. The local social history of housing may also have had an impact on the differing religious structure of NIHE estates in different district councils in NI. However, variations in the geography of religion in different parts of NI may also be important although, as Shuttleworth and Lloyd (2007) note, the extent to which the geography of religion shapes the community composition of NIHE estates or vice versa is a matter for debate. Despite this caveat it is interesting to note that areas with large population blocks of one community or the have NIHE estates whose population composition reflects this structure. As small geographical units, NIHE estates tend to be demographically homogenous in religion terms in areas where the population is already segregated. In contrast, in areas with less homogenous population structures where the underlying population is much more mixed, NIHE estates have a much greater probability of being mixed themselves.



## **Conclusion**

The data presented suggest that the demographic composition of NIHE estates varied throughout NI in 2001 reflecting diverse local population geographies of religion. Holdings in Belfast District Council appear to be more segregated, in the sense of greater population unevenness between estates, than those in other District Councils when these are combined together. Analyses that concentrate only on Belfast therefore miss much diversity and evidence for different experiences on other NIHE estates in other parts of NI. Furthermore, there are marked differences between estates by district council along a number of dimensions. NIHE estates in some areas such as Derry and Dungannon seem to be more segregated whilst those in other district councils such as Larne and Ballymoney appear to be far less segregated. There are questions, though, as to how far 'mixing' and segregation can be conceptualised and measured. Some District Councils have low rates of segregation as measured by D which describes the dimension of unevenness but when a small population minority of is evenly distributed between estates, as in Castlereagh, there are questions about the extent to which segregation really is low. Conversely, there is perhaps evidence for low segregation and mixing in the sense of more balanced populations in some estates in some District Council areas. These problems are often experienced when interpreting D or indeed other indices of segregation.

Other complicating issues arise from the spatial units used to present the data for analysis. The use of smaller units, for example, tends to increase segregation because they are more likely to be homogenous. Larger units, because they cover a larger area, are more likely to be internally diverse and so to appear less segregated. Beyond these caveats, there are questions about the social interpretation of residential segregation indicators. People may (or may not) mix at work and in other activities and place of residence may be more important in defining the identities of some people than others.

The analysis raises further practical questions about future work. One useful line of development, going beyond Census data, would be to enquire into the social experience of segregation and mixing

in different selected locations to find out how the results presented above map out in terms of everyday life as experienced by NIHE residents. The complexities of social mixing have been pointed out by (Byrne et al 2006), and this type of research is worthy of further pursuit. A focus on the operation of local housing markets (Adair et al 2000) might also be useful given the differences that appear to exist within areas. The estate results for 2001 could be used to identify places where it seems that there is a possibility that some mixing - or at least less severe segregation - is occurring for this kind of follow-up work. Further evidence of mixing in social terms to substantiate the quantitative picture of less population unevenness/and more balanced populations on some estates outside Belfast could be interesting as there is an important policy interest in using housing to promote social integration (A Shared Future 2005) and further knowledge about where (and where not) it is happening might be useful.

The results might also indicate where there is 'fertile ground' for mixed housing as promoted through NIHE pilot schemes as some DCs appear already to be more balanced in terms of religion than others and have population geographies that might be considered more mixed. Large homogenous groups of population by religion, for instance, could indicate local population geographies, in places such as Belfast and Derry, where the environment for mixed housing might be more challenging than in other locations where Catholics and Protestants live in more fragmented and smaller territorial units. Variations in the religious composition of the population across NI also suggests that different yardsticks for mixing in different places may be necessary since it might be more difficult to achieve a 50/50 mix in DCs where the religious balance of the population is 90/10 than in DCs where the population balance is more equal. The data presented in the report therefore represent a first exploration of residential segregation but indicate a need for the further exploration of the meaning of segregation and mixing via different approaches and methods.

## References

Adair, A., Berry, J., McGreal, S., Murtagh, B. and Paris, C. (2000), The local housing system in Craigavon, Northern Ireland: ethno-religious residential segregation, socio-tenural polarisation and sub-markets, *Urban Studies*, 37, 1079-1092

*A Shared Future: Policy and Strategic Framework for Good Relations in Northern Ireland*, Office of the First and Deputy First Minister (OFMDFM), Belfast, March 2005

Byrne, J., Hansson, U. and Bell, J. (2006) *Shared Living. Mixed Residential Communities in Northern Ireland*. Institute for Conflict Research, Belfast

Poole, M., Doherty, P., (1996), *Ethnic Residential Segregation in Northern Ireland*, Centre for the Study of Conflict, University of Ulster, Coleraine

Shuttleworth, I., Lloyd, C., (2007), *Mapping Segregation on Belfast NIHE Estates*, Northern Ireland Housing Executive, Belfast

# Appendices

## Appendix A Antrim

Estate	Persons	Households	Percentage Social Rented	Percentage Private rented	Percentage Catholic (RI)	Percentage Protestant (RI)	Percentage Catholic (C)	Percentage Protestant (C)
Ballycraig/Glenburn	1,138	525	50.84	5.03	1.73	81.16	2.72	93.77
Firfields	152	65	52.17	0.00	47.44	41.67	50.00	48.03
Greystone	881	344	68.42	3.51	41.50	31.63	49.09	44.89
Lower Springfarm	597	226	42.52	32.24	25.38	28.91	32.83	46.06
Menin Rd	58	24	0.00	0.00	58.62	36.21	63.79	36.21
Moylena Grove	47	18	40.91	0.00	53.33	20.00	52.94	35.29
New Dublin Rd	400	175	22.84	5.56	33.00	51.72	36.68	61.81
Newpark (inc. Caulside Pk)	1,049	440	23.30	6.59	11.01	65.70	14.12	79.01
Old Dublin Rd	361	206	32.68	4.39	19.51	67.58	21.88	73.41
Parkhall	1,337	531	55.10	4.08	19.74	58.25	24.14	70.00
Rathenraw	440	159	74.03	1.95	66.28	11.47	73.81	22.35
Springfarm Rd	66	28	12.00	12.00	50.72	34.78	56.06	39.39
Steeple	1,124	486	35.33	5.79	12.66	66.43	16.23	78.31
Stiles Altmore/Aghaboy (A)	195	83	41.86	0.00	44.74	29.47	49.75	47.21
Stiles Crossreagh/Craigfad(C)	170	67	35.82	4.48	32.54	37.87	46.43	48.21
Stiles Dromain Dr/The Glen	31	13	82.35	0.00	22.86	48.57	41.94	48.39
Stiles Farm	107	45	13.64	29.55	54.29	20.95	68.22	31.78
Stiles Rathkyle Rathglynn (R)	584	245	63.79	4.94	31.03	44.31	37.16	55.82
Townparks North	457	196	62.09	1.65	54.70	24.51	61.45	35.02
Townparks South	148	73	63.08	0.00	30.67	46.00	37.33	54.67
Upper Springfarm	175	78	86.08	0.00	40.70	28.49	49.14	43.43
<b>Total</b>	<b>9,517</b>	<b>4,027</b>	<b>47.27</b>	<b>6.06</b>	<b>25.95</b>	<b>51.08</b>	<b>30.88</b>	<b>63.00</b>

Ards

Estate	Persons	Households	Percentage social rented	Percentage private rented	Percentage Catholic (RI)	Percentage Protestant (RI)	Percentage Catholic (C)	Percentage Protestant (C)
Bowtown	878	336	78.57	0.00	1.71	58.09	7.52	85.54
Dewind/Cherryvalley	390	151	41.72	1.99	2.31	77.95	3.85	91.79
Glen Estate	936	374	64.97	4.01	8.76	62.93	12.50	80.77
Linley/Straid/Darragh	676	283	69.26	0.00	2.66	80.18	3.55	91.27
Movilla	1,084	507	47.34	3.75	7.66	69.93	10.89	85.15
Park Crescent	45	24	54.17	12.50	0.00	77.78	0.00	100.00
Railway Street	79	41	14.63	53.66	5.06	81.01	5.06	94.94
Scrabo	1,520	768	51.95	3.13	6.58	68.62	9.93	85.33
The Royal	596	234	27.78	2.56	3.19	79.53	3.86	92.11
Victoria Newtownards	70	38	50.00	0.00	17.14	70.00	25.71	74.29
West Winds	1,228	531	66.85	1.69	1.71	72.96	3.50	90.88
<b>Total</b>	<b>7,502</b>	<b>3,287</b>	<b>56.68</b>	<b>3.07</b>	<b>4.84</b>	<b>70.17</b>	<b>7.72</b>	<b>87.16</b>

## Armagh

Estate	Persons	Households	Percentage Social Rented	Percentage Private rented	Percentage Catholic (RI)	Percentage Protestant (RI)	Percentage Catholic (C)	Percentage Protestant (C)
Alexander Armagh	94	35	18.18	9.09	43.18	44.32	54.26	45.74
Ardmore	311	97	46.74	6.52	59.37	33.33	63.99	36.01
Banbrook	131	74	64.79	8.45	93.55	0.00	91.24	6.57
Barrack Street	127	61	59.32	5.08	2.36	85.04	4.80	95.20
Callan Street	80	25	62.50	12.50	81.01	0.00	96.20	3.80
Callanbridge	144	43	62.22	0.00	77.08	4.17	93.71	4.20
Cregagh Armagh	60	20	0.00	12.50	90.16	0.00	95.16	4.84
Culdee	225	101	38.46	13.46	88.05	2.65	92.51	6.17
Daires Willows	136	45	17.65	19.61	92.70	0.00	95.65	2.17
Dalton	245	82	46.15	11.54	81.22	0.00	95.08	4.92
Drumarg	157	62	79.66	0.00	84.08	0.00	96.23	3.77
Drumbreda	226	67	50.68	0.00	94.25	0.00	98.68	1.32
Dukes Grove	78	38	32.61	6.52	96.05	3.95	92.50	7.50
Folly	204	104	31.53	18.92	48.73	41.62	49.75	47.29
Legar Hill Park	148	43	40.38	5.77	92.52	0.00	100.00	0.00
Lisanally	116	52	68.89	6.67	7.38	76.23	9.32	90.68
Longstone	143	50	52.00	6.00	89.58	2.08	97.87	2.13
Mullacreevie	401	117	56.10	8.13	83.13	2.23	91.42	7.11
Navan Street	255	95	31.46	15.73	92.94	1.18	97.65	2.35
Newry Road	149	50	0.00	6.12	59.72	30.56	62.59	37.41
Orangefield	538	209	34.48	0.00	0.56	90.74	0.55	97.79
Windmill	116	44	40.48	7.14	92.37	5.08	94.87	5.13
<b>Total</b>	<b>4,084</b>	<b>1,514</b>	<b>42.94</b>	<b>7.88</b>	<b>65.20</b>	<b>24.47</b>	<b>70.66</b>	<b>28.54</b>

## Ballymena

Estate	Persons	Households	Percentage Social Rented	Percentage Private rented	Percentage Catholic (RI)	Percentage Protestant (RI)	Percentage Catholic (C)	Percentage Protestant (C)
Adair	468	214	43.33	10.00	29.55	59.53	30.04	66.81
Ballee	875	354	56.91	1.66	7.56	67.24	12.17	83.70
Ballykeel I	762	333	46.67	0.91	5.58	76.78	7.59	87.30
Ballykeel II	1,113	397	75.90	2.89	3.72	72.03	6.80	87.74
Balmoral Ave.	140	57	29.31	17.24	20.28	58.04	28.57	69.29
Carminney	47	23	26.09	13.04	0.00	84.09	6.38	93.62
Clonavon	89	39	54.55	20.45	17.58	54.95	24.72	67.42
Doury Road	403	171	62.87	5.99	31.80	49.03	35.11	62.34
Drumtara	350	144	86.57	0.00	1.73	78.32	2.02	91.07
Dunclug	563	216	62.73	2.73	46.06	33.45	50.98	41.03
Dunvale	644	230	56.02	3.73	52.88	31.10	58.58	37.71
Fisherwick	81	34	60.00	0.00	79.49	3.85	86.59	13.41
Galgorm	81	30	26.47	0.00	0.00	92.59	0.00	96.30
Gracehill	117	44	31.91	0.00	2.75	97.25	2.59	97.41
Harryville	1,164	524	55.71	5.81	3.83	80.24	5.38	92.97
Millfield	334	122	41.44	0.00	42.60	35.95	47.60	49.70
Rectory	344	158	26.47	11.18	40.17	52.89	43.53	56.47
Tullygarley	103	48	40.38	0.00	2.80	94.39	2.86	97.14
<b>Total</b>	<b>7,678</b>	<b>3,138</b>	<b>55.25</b>	<b>4.36</b>	<b>19.07</b>	<b>62.60</b>	<b>22.25</b>	<b>73.90</b>



## Ballymoney

Estate	Persons	Households	Percentage Social Rented	Percentage Private rented	Percentage Catholic (RI)	Percentage Protestant (RI)	Percentage Catholic (C)	Percentage Protestant (C)
Carnary	91	36	100.00	0.00	4.55	57.95	13.83	77.66
Eastermeade	108	63	64.62	9.23	10.71	76.79	15.60	81.65
Glebeside	893	394	64.91	3.76	10.53	71.67	13.81	84.97
Margaret Avenue	89	36	24.24	0.00	24.72	58.43	30.68	69.32
Townparks	733	309	28.24	4.32	13.88	76.19	13.70	84.25
Trinity Drive	148	66	47.068.82	14.84	75.48	19.05	80.95	
Westgate	70	28	20.83	12.50	73.91	17.39	70.83	20.83
<b>Total</b>	<b>2,132</b>	<b>932</b>	<b>50.38</b>	<b>4.65</b>	<b>14.39</b>	<b>70.90</b>	<b>16.84</b>	<b>81.15</b>

## Banbridge

Estate	Persons	Households	Percentage Social Rented	Percentage Private rented	Percentage Catholic (RI)	Percentage Protestant (RI)	Percentage Catholic (C)	Percentage Protestant (C)
"Banbridge Town (incl. old Ests.1,1A,2,3,4,5,6,7,8,9,10,13,30,3*	728	263	52.33	3.23	39.01	47.66	42.82	54.01
Ballygowan/Granville	202	81	7.14	10.71	51.00	36.00	56.22	43.78
Brookfield/Edenderry	283	101	45.63	8.74	53.50	34.27	58.66	40.28
Cline/Hillside	411	162	58.06	3.87	26.49	56.32	30.58	65.53
Forthill	99	45	45.45	6.82	25.51	63.27	26.53	73.47
Hillhead	83	33	40.74	0.00	58.54	37.80	57.83	38.55
Huntley/Peggys Loanin	61	31	55.56	0.00	38.60	50.88	39.34	60.66
Iveagh Drive/Victoria GDNS	202	79	44.59	8.11	36.14	53.47	37.13	61.39
Maryville	250	101	45.45	7.07	31.08	53.39	35.46	63.35
Mount Charles/Mount Pleasant/Mourneview	246	104	36.04	8.11	36.89	56.15	38.52	61.48
Primrose/Downshire	153	58	59.02	0.00	52.53	41.14	57.24	42.76
Reilly/Victoria Park/Scarva Walk	119	65	43.84	8.22	58.77	32.46	57.98	42.02
Seapatrick	129	45	63.04	0.00	11.54	76.92	12.00	85.60
Seapatrick Avenue etc.	61	26	36.36	0.00	9.68	80.65	10.34	89.66
<b>Total</b>	<b>3,027</b>	<b>1,194</b>	<b>46.38</b>	<b>5.27</b>	<b>38.17</b>	<b>49.69</b>	<b>41.42</b>	<b>56.79</b>

## Carrickfergus

Estate	Persons	Households	Percentage Social Rented	Percentage Private rented	Percentage Catholic (RI)	Percentage Protestant (RI)	Percentage Catholic (C)	Percentage Protestant (C)
Carrick Central	177	85	27.78	30.00	6.63	67.40	7.73	77.90
Castlemara	393	167	53.14	1.71	3.12	68.83	5.38	87.69
Castlemara/Macroon	62	24	13.64	0.00	18.33	63.33	18.03	81.97
Davys St.	115	65	60.56	12.68	7.02	67.54	8.62	78.45
Drumhoy etc.	695	292	34.60	5.54	2.45	76.91	2.48	91.97
Dunloskin	179	69	54.17	4.17	5.41	70.81	7.39	92.61
Eden	174	74	58.90	0.00	0.00	76.02	0.00	82.18
Glenfield	314	120	66.06	0.00	0.00	80.32	3.18	92.99
Lower Woodburn	1,434	567	42.14	1.55	3.21	73.85	3.85	89.30
Macroon	46	13	0.00	21.43	0.00	71.11	0.00	87.50
McKeens etc.	103	39	23.08	7.69	5.71	53.33	6.86	78.43
Sunnylands	1,270	538	39.44	5.56	7.55	70.18	9.90	85.07
Taylor's Ave	82	29	70.97	9.68	15.73	77.53	20.48	79.52
Upper Woodburn	63	36	50.00	9.38	9.23	78.46	9.38	85.94
Victoria Carrickfergus	703	307	26.56	1.97	5.61	71.81	5.54	88.21
Windmill Hill	279	133	39.53	2.33	26.16	50.90	29.39	66.67
<b>Total</b>	<b>6,089</b>	<b>2,558</b>	<b>41.01</b>	<b>4.59</b>	<b>5.75</b>	<b>71.45</b>	<b>7.04</b>	<b>86.55</b>

## Castlereagh

Estate	Persons	Households	Percentage Social Rented	Percentage Private rented	Percentage Catholic (RI)	Percentage Protestant (RI)	Percentage Catholic (C)	Percentage Protestant (C)
Ballybeen	3,828	1,689	51.75	2.27	0.47	80.44	1.36	95.03
Belvoir	1,890	992	50.39	2.05	2.68	77.17	3.56	91.38
Bests Hill	57	22	88.00	0.00	0.00	72.73	10.00	85.00
Braniel	1,477	705	44.80	3.90	0.41	80.15	1.68	93.22
Brooklands	406	173	35.54	1.81	0.72	79.04	1.45	95.65
Clonduff	618	268	54.78	1.10	0.00	78.90	1.45	95.65
Coronation Pk	143	68	61.54	4.62	2.26	84.21	4.26	95.74
Cregagh	1,900	918	51.40	2.36	1.96	78.38	3.52	92.85
Downshire	537	238	25.61	3.66	0.56	77.37	3.93	91.21
Geary Rd.	49	21	0.00	0.00	0.00	84.00	0.00	94.00
Grays Pk.	293	137	40.29	0.00	2.77	81.66	2.72	91.84
Mawhinney Pk.	58	24	33.33	0.00	0.00	80.36	5.00	90.00
Milltown Castlereagh	248	97	33.33	0.00	1.59	84.06	2.80	96.00
Moatview Pk	192	94	31.78	2.80	0.00	80.98	3.16	93.68
Newtownbreda	140	69	28.57	12.86	4.32	80.58	4.17	93.75
Tullycarnet	1,011	455	60.35	1.32	0.00	82.77	2.06	93.42
Vionville	338	124	61.16	17.36	0.90	66.67	7.25	82.90
<b>Total</b>	<b>13,185</b>	<b>6,094</b>	<b>49.04</b>	<b>2.70</b>	<b>1.08</b>	<b>79.36</b>	<b>2.53</b>	<b>93.30</b>

## Coleraine

Estate	Persons	Households	Percentage Social Rented	Percentage Private rented	Percentage Catholic (RI)	Percentage Protestant (RI)	Percentage Catholic (C)	Percentage Protestant (C)
Ballysally	1,235	539	87.01	1.11	13.04	60.87	18.64	75.93
Burnside Park	93	34	56.76	0.00	27.55	65.31	28.42	65.26
Ferry Quay Street	57	31	80.65	9.68	23.33	53.33	30.36	64.29
Heights/Killowen	1,699	727	51.44	3.70	37.41	52.65	39.56	58.02
Millburn/Cherry Place	811	316	44.66	6.15	14.94	73.33	17.18	81.35
New Mills Coleraine	275	116	62.71	5.08	23.49	62.99	26.28	71.53
The Crescent/Harpers Hill	1,587	620	65.82	1.90	23.69	58.45	26.63	70.29
Windyhall	347	119	51.16	4.65	0.00	87.93	0.00	97.42
<b>Total</b>	<b>6,104</b>	<b>2,502</b>	<b>62.76</b>	<b>3.13</b>	<b>22.88</b>	<b>61.25</b>	<b>25.88</b>	<b>70.96</b>

## Cookstown

Estate	Persons	Households	Percentage Social Rented	Percentage Private rented	Percentage Catholic (RI)	Percentage Protestant (RI)	Percentage Catholic (C)	Percentage Protestant (C)
Beechway	161	57	51.61	4.84	6.25	83.75	6.29	90.57
Coagh St/Coagh Cres/Union St	89	45	30.00	18.00	66.29	26.97	73.86	26.14
Coolnafranky	262	79	82.05	0.00	82.69	2.69	92.64	4.65
Dunleath	76	24	12.00	12.00	73.33	18.67	76.00	20.00
Gortalowry	214	72	33.33	9.52	78.30	12.26	84.83	12.32
Killymoon	93	33	60.61	0.00	45.83	42.71	53.76	46.24
New Monrush	426	160	52.23	3.82	3.32	84.36	3.81	91.67
Old Monrush	370	184	63.22	1.72	0.00	91.13	2.39	94.41
Orritor Street	38	23	68.75	0.00	85.00	7.50	92.31	0.00
Ratheen/Greenvale/Sullenboy	640	218	52.97	4.11	90.28	3.86	95.60	4.40
Stewart Ave/Cook Cres	400	166	50.00	8.55	11.52	80.63	14.67	83.86
<b>Total</b>	<b>2,769</b>	<b>1,061</b>	<b>53.45</b>	<b>5.05</b>	<b>44.48</b>	<b>46.34</b>	<b>48.08</b>	<b>49.71</b>

## Craigavon

Estate	Persons	Households	Percentage Social Rented
Aghagallon/Meadowbank/Drumbeg	1,152	379	60.27
Ardowen	406	150	76.00
Avenue Road	356	177	52.63
Ballyoran	847	308	34.23
Bowens Lane	39	14	16.67
Brownstown Old	462	175	59.02
Churchill Pk.	350	145	86.71
Clonmeen	463	195	42.53
Clounagh Park	29	15	50.00
Corcrair	784	344	50.45
Drumgor Heights	92	41	43.18
Edward Street	1,102	414	34.66
Enniskeen	472	183	56.18
Fitzroy St.	87	41	38.30
Garvaghy Pk	221	98	87.00
Gray Estate	957	364	22.77
Greenview Gds.	28	14	43.75
Killicomaine	938	404	36.22
Kilwilkie	1,574	545	51.85
Legahorey	73	24	0.00
Manor/Hill Street	227	112	66.38
Mourneview Lurgan	1,097	509	42.55
Moyaverty/Drumellan/Rossmoyle	263	87	85.54
Obins Ave.	68	37	75.61
Parkmore	259	111	56.48
Queen Street	223	128	49.59
Rectory Pk/Brownstone West	569	237	31.36
Redmanville	788	335	56.01
Seagoe	138	59	37.74
Taghnevan	1,739	607	38.26
Union Street	216	96	64.65
Westacres	348	124	71.31
Woodside	422	138	45.14
<b>Total</b>	<b>16,789</b>	<b>6,610</b>	<b>47.96</b>

Percentage Private rented	Percentage Catholic (RI)	Percentage Protestant (RI)	Percentage Catholic (C)	Percentage Protestant (C)
3.24	87.14	2.50	94.21	4.75
2.00	93.20	0.76	96.51	2.00
3.51	0.00	88.43	1.72	98.28
8.39	92.54	0.71	96.69	2.01
16.67	0.00	70.73	0.00	100.00
9.84	0.00	85.99	1.28	93.39
1.90	91.88	2.52	96.87	2.28
3.45	67.85	15.74	73.12	24.95
16.67	0.00	100.00	0.00	100.00
5.34	5.67	80.33	6.15	91.17
13.64	54.55	31.82	61.80	38.20
10.72	88.36	1.08	96.12	3.88
3.37	29.68	50.53	33.40	61.52
19.15	0.00	80.49	0.00	100.00
3.00	87.95	0.00	98.63	1.37
5.50	0.63	91.54	1.25	96.88
18.75	0.00	89.29	0.00	100.00
6.38	0.32	84.91	0.65	97.20
4.98	95.55	0.19	98.11	0.76
22.22	64.10	17.95	77.33	18.67
7.76	59.66	29.61	67.70	32.30
9.27	0.27	84.11	2.20	95.61
0.00	68.42	4.51	80.61	7.98
14.63	63.64	0.00	85.07	14.93
17.59	1.14	73.48	7.98	87.83
3.31	1.33	83.19	4.04	91.93
8.18	2.12	86.77	3.51	93.68
3.52	0.38	85.70	1.02	96.32
0.00	0.00	86.67	4.32	95.68
8.04	93.09	1.27	97.64	2.36
0.00	0.00	92.96	0.00	97.24
4.92	47.04	20.71	58.84	33.04
15.28	83.68	10.96	86.01	11.89
6.69	49.39	39.20	53.23	44.84



## Derry

Estate	Persons	Households	Percentage Social Rented	Percentage Private rented	Percentage Catholic(RI)	Percentage Protestant(RI)	Percentage Catholic(C)	Percentage Protestant(C)
Ballymagroarty	1,417	419	76.08	2.05	90.07	1.34	97.24	1.49
Belmont	526	222	25.12	8.53	89.81	6.11	95.19	4.81
Benview Estate Cosquin Cottages	51	13	60.00	0.00	68.63	31.37	68.63	31.37
Bishops St./Anne St.	251	92	54.37	2.91	91.20	1.20	98.80	1.20
Bradley park	119	35	91.67	0.00	95.00	2.50	97.46	2.54
Brandywell	584	196	81.86	1.47	90.34	0.00	97.96	1.53
Brigade	327	147	63.06	7.64	20.55	70.25	23.46	75.62
Carnhill	1,696	532	43.42	4.14	91.75	0.53	98.58	0.71
Caw	1,337	594	72.82	3.02	4.93	83.03	7.57	90.64
Clooney	274	106	65.42	0.00	26.64	64.60	27.90	71.01
Cloughglass (The Glen)	752	268	58.17	1.14	84.82	9.19	89.05	10.55
Coshquin	375	101	0.00	0.00	94.37	1.61	96.55	2.65
Creggan	1,746	551	75.23	0.56	93.30	0.17	98.18	1.48
Curryneirin	457	173	76.54	1.68	87.42	5.86	92.97	5.71
Drumahoe	33	13	25.00	0.00	16.67	83.33	0.00	100.00
Elmwood	172	66	39.39	4.55	78.49	0.00	94.80	1.73
Galligh	5,025	1,522	66.87	1.98	95.15	0.62	98.55	1.03
Gobnascale	591	231	67.94	7.18	93.76	2.53	96.48	3.02
Hazelbank	792	239	69.80	6.12	93.60	1.51	96.97	2.27
Hollymount Park	84	27	61.54	11.54	100.00	0.00	100.00	0.00
Kilfennan	495	209	55.17	0.00	0.80	92.57	3.21	94.98
Lower Creggan	1,646	577	53.53	3.45	92.37	0.98	98.30	s1.34
Meenan Park	308	118	63.25	0.00	94.50	0.97	97.09	0.97
Northland Road Academy Rd.	288	117	20.18	12.84	77.85	9.00	84.54	11.34
Rossville	165	101	83.81	0.00	87.12	0.00	100.00	0.00
Shantallow	2,076	617	65.70	2.42	91.11	0.58	97.31	2.40
The Fountain	113	73	91.67	0.00	7.41	81.48	8.04	91.96
Tullyally	57	16	66.67	0.00	0.00	90.00	0.00	100.00
<b>Total</b>	<b>21,757</b>	<b>7,375</b>	<b>62.94</b>	<b>2.84</b>	<b>81.90</b>	<b>11.26</b>	<b>86.69</b>	<b>12.60</b>

Down

Estate	Persons	Households	Percentage Social Rented	Percentage Private rented	Percentage Catholic (RI)	Percentage Protestant (RI)	Percentage Catholic (C)	Percentage Protestant (C)
Ardpatrick	62	22	18.18	0.00	100.00	0.00	100.00	0.00
Bridge St/Mount Cres	55	25	64.00	12.00	23.64	65.45	23.64	76.36
Croob Park	80	34	26.47	8.82	45.00	38.75	48.75	51.25
Flying Horse	433	155	73.55	3.87	90.30	3.46	95.84	4.16
Hillfoot	198	49	20.41	0.00	75.76	11.11	79.80	15.15
Kennedy Sq	214	84	21.43	15.48	87.38	6.07	93.46	6.54
Knocknashinna/Ardmeen	205	80	7.50	21.25	85.37	10.73	87.80	10.73
Langley	282	116	68.10	5.17	0.00	82.98	6.74	91.84
Loughside Dr Flats	83	37	70.27	8.11	75.90	10.84	84.34	15.66
Marian Park	114	30	83.33	0.00	83.33	0.00	92.11	5.26
Meadowlands	131	60	46.67	15.00	44.27	11.45	73.28	22.14
Model Farm	574	238	63.87	9.24	79.09	0.52	91.29	8.19
New Model Farm	309	106	69.81	2.83	83.82	0.97	93.85	4.21
Saul St/Rd	164	66	36.36	18.18	81.10	0.00	89.02	9.15
Scotch Street	108	45	33.33	6.67	88.89	5.56	92.59	7.41
St Patricks Dr/Thomas Russell Pk	111	49	18.37	28.57	88.29	8.11	90.99	9.01
Vianstown	51	21	47.62	14.29	90.20	5.88	94.12	5.88
<b>Total</b>	<b>3,174</b>	<b>1,217</b>	<b>50.86</b>	<b>9.61</b>	<b>72.97</b>	<b>13.26</b>	<b>80.84</b>	<b>17.96</b>

## Dungannon

Estate	Persons	Households	Percentage Social Rented	Percentage Private rented	Percentage Catholic (RI)	Percentage Protestant (RI)	Percentage Catholic (C)	Percentage Protestant (C)
Ballygawley Road	326	156	87.50	2.08	86.34	0.93	96.34	1.83
Charlemont St	32	16	28.57	0.00	100.00	0.00	100.00	0.00
Drumcoo	568	248	34.98	9.47	77.68	13.71	82.25	16.70
Dunlea Vale	118	39	67.86	0.00	90.08	4.96	94.17	5.83
Fairmount	38	19	62.50	0.00	86.49	0.00	92.31	0.00
Gortmerron	155	68	48.57	8.57	5.73	80.89	8.92	89.17
Granville/Mulladrolly	110	40	42.86	0.00	2.65	88.50	2.75	97.25
Lisnahull	244	79	51.28	0.00	87.80	1.22	100.00	0.00
Milltown Dungannon	232	101	32.67	8.91	0.00	83.19	5.22	87.39
Moygashel	508	223	34.56	2.76	0.60	87.90	3.13	94.53
New Mills Dungannon	61	22	26.09	0.00	0.00	95.00	0.00	100.00
Springdale	118	42	44.44	0.00	84.17	2.50	97.48	2.52
Union Place	32	12	16.67	33.33	81.82	0.00	100.00	0.00
<b>Total</b>	<b>2,542</b>	<b>1,065</b>	<b>45.55</b>	<b>5.18</b>	<b>49.18</b>	<b>39.79</b>	<b>54.87</b>	<b>43.29</b>

## Fermanagh

Estate	Persons	Households	Percentage Social Rented	Percentage Private rented	Percentage Catholic (RI)	Percentage Protestant (RI)	Percentage Catholic (C)	Percentage Protestant (C)
Chanterhill & Cavanaleck	706	266	40.45	9.36	49.86	35.23	56.22	39.48
Coleshill	221	122	38.10	9.52	2.63	85.53	2.76	97.24
Cornagrade	831	359	38.81	10.51	86.56	7.75	90.53	9.10
Drumawill	452	165	53.69	4.03	51.72	28.66	63.72	34.07
Drumclay	282	105	72.64	8.49	74.25	13.43	73.12	25.81
Enniskillen Town Centre	27	12	46.15	23.08	56.52	13.04	51.72	27.59
Hillview/ Kilmacormick	981	376	58.45	2.41	87.82	3.99	94.29	5.71
Windmill & Coleshill New	469	181	35.23	5.70	63.01	27.10	68.09	31.26
<b>Total</b>	<b>3,969</b>	<b>1,586</b>	<b>46.87</b>	<b>7.13</b>	<b>67.64</b>	<b>21.34</b>	<b>73.33</b>	<b>25.28</b>

Larne

Estate	Persons	Households	Percentage Social Rented	Percentage Private rented	Percentage Catholic (RI)	Percentage Protestant (RI)	Percentage Catholic (C)	Percentage Protestant (C)
Ferris Park	879	377	35.41	2.83	8.59	76.72	11.04	86.46
Larne Town	231	114	50.00	16.10	38.72	42.13	43.53	55.17
Linn Road	3,310	1,388	42.30	3.54	22.17	60.12	26.62	69.78
Millbrook	157	77	43.04	3.80	3.95	81.58	7.10	88.39
Sallagh Park	337	146	38.85	2.16	47.21	43.11	53.27	46.73
Seacourt	521	208	52.19	9.21	27.94	52.22	32.63	62.21
<b>Total</b>	<b>5,435</b>	<b>2,310</b>	<b>42.44</b>	<b>4.57</b>	<b>22.29</b>	<b>60.82</b>	<b>26.49</b>	<b>70.23</b>

## Limavady

Estate	Persons	Households	Percentage Social Rented	Percentage Private rented	Percentage Catholic (RI)	Percentage Protestant (RI)	Percentage Catholic (C)	Percentage Protestant (C)
Alexander Road	122	52	56.36	5.45	30.33	45.08	43.80	56.20
Anderson Crescent	52	23	85.71	0.00	24.49	75.51	25.49	74.51
Anderson Park	355	110	24.77	9.17	42.09	48.31	45.20	52.54
Connell Street	59	45	50.00	18.00	23.33	61.67	26.67	68.33
Cranford/Thackery/Church St	98	45	25.53	6.38	3.13	83.33	6.19	93.81
Drumachose Park	342	116	59.32	2.54	33.83	51.34	37.83	60.41
Edenmore	166	64	60.00	8.00	33.54	57.32	38.32	59.88
Hospital Lane	865	345	59.39	3.64	42.79	44.42	46.17	53.13
Josephine	242	90	41.30	3.26	70.33	16.67	81.17	18.83
Kennaught	82	34	72.73	0.00	73.49	22.89	79.27	20.73
Rockview	155	62	50.79	4.76	28.13	58.75	33.77	66.23
Roemill Gdns	128	57	50.00	9.68	55.20	34.40	56.49	38.93
Roemill/Massey Ave	108	53	38.71	14.52	40.00	46.67	44.44	55.56
The Glens	364	141	45.53	3.25	47.86	40.91	51.49	44.44
Woodlands Limavady	544	199	53.33	7.69	55.58	36.56	59.45	39.45
<b>Total</b>	<b>3,682</b>	<b>1,436</b>	<b>51.08</b>	<b>5.99</b>	<b>44.13</b>	<b>44.22</b>	<b>48.52</b>	<b>50.04</b>

## Lisburn

Estate	Persons	Households	Percentage Social Rented	Percentage Private rented	Percentage Catholic (RI)	Percentage Protestant (RI)	Percentage Catholic (C)	Percentage Protestant (C)
Ambleside/Molyneux/James Craig Way	228	96	78.49	0.00	10.48	79.91	11.69	84.42
Areema	429	188	54.69	0.00	60.57	22.57	66.82	31.04
Ballymacash	178	64	28.07	0.00	0.00	75.72	5.00	95.00
Ballymacoss	682	279	61.32	2.09	2.62	75.84	2.20	88.99
Beattie Park	405	197	37.95	6.67	13.30	75.12	15.56	82.47
Colinbrook/Old Colin/Colinmill/Colinvale/Laurelbank/Glenwood/	5,453	1,537	78.83	1.55	87.96	0.95	96.39	3.09
Glasvey/Cherry/Juniper/Thornhill/Summerhill/Broom/Gardenmore	3,562	1,291	64.65	2.30	89.40	0.76	96.72	3.03
Gortmore Park	56	30	40.63	9.38	42.86	37.50	50.00	44.83
Greenwood	450	229	44.72	8.54	6.11	72.85	8.52	87.44
Hilden	1,653	746	34.46	5.05	13.56	63.32	17.47	74.92
Hill Street	379	147	51.75	0.00	20.16	58.09	23.54	71.16
Hillhall	839	337	65.63	0.93	1.07	77.79	1.44	93.87
Iniscarn Park	44	27	47.83	0.00	26.19	50.00	32.61	60.87
Jubilee	387	190	41.15	3.13	11.61	67.02	15.50	80.62
Knockburn/Rushmore/Drumard/Causewayend	978	412	51.25	2.25	12.10	66.73	13.61	81.27
Knockmore	1,024	391	43.30	0.77	38.05	41.85	45.02	52.73
Lambeg	296	145	37.14	11.43	5.88	74.05	8.05	84.90
Manor/Craig Gardens	510	246	49.59	2.44	9.88	71.74	12.99	84.06
Milltown Lisburn Antrim Street	721	265	57.25	2.23	12.52	69.48	15.20	81.31
Old Warren	1,473	657	73.95	0.00	2.45	70.12	5.23	87.42
Seymour Hill & Conway	897	429	50.59	3.55	1.44	84.46	1.57	95.63
Seymour Hill/Conway	1,320	640	55.81	1.38	2.05	83.71	3.18	93.48
Tonagh	742	294	43.62	5.03	44.58	40.92	48.59	49.66
Warren	275	134	50.00	2.27	20.42	58.10	22.46	73.19
<b>Total</b>	<b>22,981</b>	<b>8,971</b>	<b>58.08</b>	<b>2.52</b>	<b>42.98</b>	<b>40.88</b>	<b>47.81</b>	<b>49.22</b>

## Magherafelt

Estate	Persons	Households	Percentage Social Rented	Percentage Private rented	Percentage Catholic (RI)	Percentage Protestant (RI)	Percentage Catholic (C)	Percentage Protestant (C)
Beechland	237	82	32.29	15.63	39.39	57.58	39.66	60.34
Glenbyrne	320	113	24.56	16.67	54.43	36.08	54.55	43.57
Greenvale	107	29	68.42	0.00	52.73	30.00	61.47	35.78
Killowen	119	47	42.50	7.50	87.39	12.61	91.45	8.55
Leckagh	582	204	64.76	2.86	30.41	56.19	35.51	62.44
Mullaghboy	60	24	38.10	19.05	73.77	21.31	76.67	23.33
Queens Ave	188	72	30.95	10.71	41.34	51.40	44.27	52.60
Sandy Brae/ Ashgrove	103	37	100.00	0.00	66.67	24.24	67.65	29.41
Westland	110	51	40.43	6.38	27.10	72.90	27.52	72.48
<b>Total</b>	<b>1,826</b>	<b>659</b>	<b>47.74</b>	<b>8.59</b>	<b>45.23</b>	<b>45.95</b>	<b>48.09</b>	<b>50.27</b>



Moyle

Estate	Persons	Households	Percentage Social Rented	Percentage Private rented	Percentage Catholic (RI)	Percentage Protestant (RI)	Percentage Catholic (C)	Percentage Protestant (C)
Altananam	97	37	82.35	0.00	85.86	3.03	96.88	3.13
Broombeg/ Glentaisie	61	24	69.57	13.04	73.44	21.88	80.33	19.67
Dalriada Gdn/ Knocklayd View	98	38	47.06	8.82	68.69	19.19	70.71	23.23
Drumawillin	75	30	45.71	17.14	56.94	31.94	61.33	34.67
Fogarty Cres	40	15	0.00	17.65	92.11	7.89	100.00	0.00
Leyland Rd/ Market St	35	17	21.43	21.43	72.22	16.67	100.00	0.00
Marconi/ Shoanes/Kemp	273	85	62.11	3.16	77.74	11.68	85.87	13.01
Mayo Dr/ Macauley Pk	98	53	66.10	5.08	69.31	23.76	77.55	22.45
<b>Total</b>	<b>777</b>	<b>299</b>	<b>56.91</b>	<b>7.72</b>	<b>74.71</b>	<b>15.84</b>	<b>82.61</b>	<b>15.82</b>

## Newry & Mourne

Estate	Persons	Households	Percentage Social Rented	Percentage Private rented	Percentage Catholic (RI)	Percentage Protestant (RI)	Percentage Catholic (C)	Percentage Protestant (C)
Altnaveigh	121	47	91.43	8.57	90.24	2.44	92.62	7.38
Ashgrove	91	37	9.38	9.38	50.53	43.16	56.67	43.33
Barcroft	440	159	46.01	7.36	91.34	0.00	95.97	2.01
Boat Street	411	161	29.19	8.07	90.86	0.74	97.80	2.20
Carnagat	840	294	55.00	6.33	87.65	0.36	95.49	3.80
Carrivernacloone	237	81	7.23	10.84	92.80	0.00	98.74	1.26
Cloughrea	736	267	36.80	10.04	81.45	6.28	91.03	8.15
Daisy Hill	97	44	12.12	0.00	93.88	0.00	100.00	0.00
Derrybeg	512	176	44.39	4.81	92.28	0.58	99.41	0.59
Derrybeg Cottages	38	17	0.00	0.00	100.00	0.00	85.37	7.32
Dominic Street	303	169	44.23	6.41	81.99	3.86	95.05	4.95
Drumalane	351	119	38.10	9.52	90.72	0.00	98.00	2.00
Drumgullion	320	117	44.00	2.40	90.16	0.95	95.28	4.72
Greenfield	571	188	41.88	8.90	88.97	3.91	92.99	4.55
High Street	187	71	38.81	4.48	92.39	0.00	97.84	2.16
Loanda	139	42	58.54	7.32	87.05	0.00	100.00	0.00
Monnina Villas	83	29	18.52	11.11	81.93	3.61	87.95	12.05
Mourneview Newry	420	160	67.11	5.92	78.62	2.14	91.39	7.18
Shandon	573	195	26.84	6.32	38.30	45.23	44.50	49.83
The Meadows	486	189	28.79	12.12	90.51	3.03	95.73	4.27
Violet Hill	423	143	19.73	10.20	89.41	4.24	94.80	5.20
Warrenpoint Road	428	155	27.04	5.66	90.97	1.39	98.59	1.41
<b>Total</b>	<b>7,807</b>	<b>2,860</b>	<b>38.73</b>	<b>7.55</b>	<b>84.10</b>	<b>5.73</b>	<b>91.18</b>	<b>7.84</b>

## Newtownabbey

Estate	Persons	Households	Percentage Social Rented	Percentage Private rented	Percentage Catholic (RI)	Percentage Protestant (RI)	Percentage Catholic (C)	Percentage Protestant (C)
Abbeyglen	71	22	52.00	0.00	70.59	13.24	72.46	23.19
Abbeyville	278	119	52.07	23.97	43.88	41.37	47.18	48.59
Ballyduff	1,177	473	34.77	4.75	3.44	71.58	4.18	90.26
Bawnmore/Mount St.	251	83	75.00	3.57	85.32	2.38	95.31	4.69
Bleach Green	129	50	53.85	0.00	15.63	58.59	19.69	73.23
Glenvarna	351	154	25.48	1.91	3.95	78.25	6.38	91.88
Glenville	366	185	63.39	10.93	61.00	18.66	68.78	26.80
Jennings	181	69	24.00	12.00	1.70	81.82	0.00	98.32
Longlands	350	122	70.54	0.00	87.32	7.61	91.93	7.20
Monkstown	1,371	605	60.61	1.02	0.51	78.64	1.31	95.04
Mossley	318	130	16.54	11.28	3.13	81.82	3.19	94.57
New Mossley	1,171	526	75.97	2.33	1.29	71.12	2.31	91.43
Old Mossley	611	284	42.49	1.10	2.62	80.03	4.40	92.17
Parkmount	28	13	43.75	18.75	0.00	100.00	0.00	100.00
Queens Park	644	313	47.97	8.45	3.77	79.75	6.24	90.48
Rathcoole	4,070	1,838	56.96	2.45	1.13	79.97	2.41	93.64
Rathfern	896	339	31.86	3.54	1.01	78.32	2.00	92.78
Rushpark	592	327	33.74	6.44	3.38	77.36	6.09	90.02
<b>Total</b>	<b>12,855</b>	<b>5,652</b>	<b>51.53</b>	<b>4.06</b>	<b>8.87</b>	<b>71.43</b>	<b>10.64</b>	<b>85.30</b>

## North Down

Estate	Persons	Households	Percentage Social Rented	Percentage Private rented	Percentage Catholic (RI)	Percentage Protestant (RI)	Percentage Catholic (C)	Percentage Protestant (C)
Bloomfield Rd/Balloo	2,100	965	67.61	2.74	3.84	63.73	7.39	82.55
Churchill	197	86	32.61	9.78	12.82	69.74	12.50	83.00
Clandeboyne Rd	210	109	34.29	10.48	9.95	54.98	14.98	79.71
Clanmorris	64	30	30.77	0.00	9.09	71.21	10.61	80.30
Conlig	476	190	63.59	3.08	2.49	63.83	6.08	84.28
Kilcooley	2,042	968	57.83	3.44	2.60	63.09	4.82	86.12
Skipperstone	148	74	56.25	0.00	0.00	75.33	2.08	95.14
Whitehill	1,116	514	57.88	2.99	8.45	68.06	10.47	83.81
Woodlands Bangor	97	35	24.39	0.00	13.48	42.70	14.89	72.34
<b>Total</b>	<b>6,450</b>	<b>2,971</b>	<b>59.12</b>	<b>3.40</b>	<b>4.72</b>	<b>64.24</b>	<b>7.43</b>	<b>84.07</b>

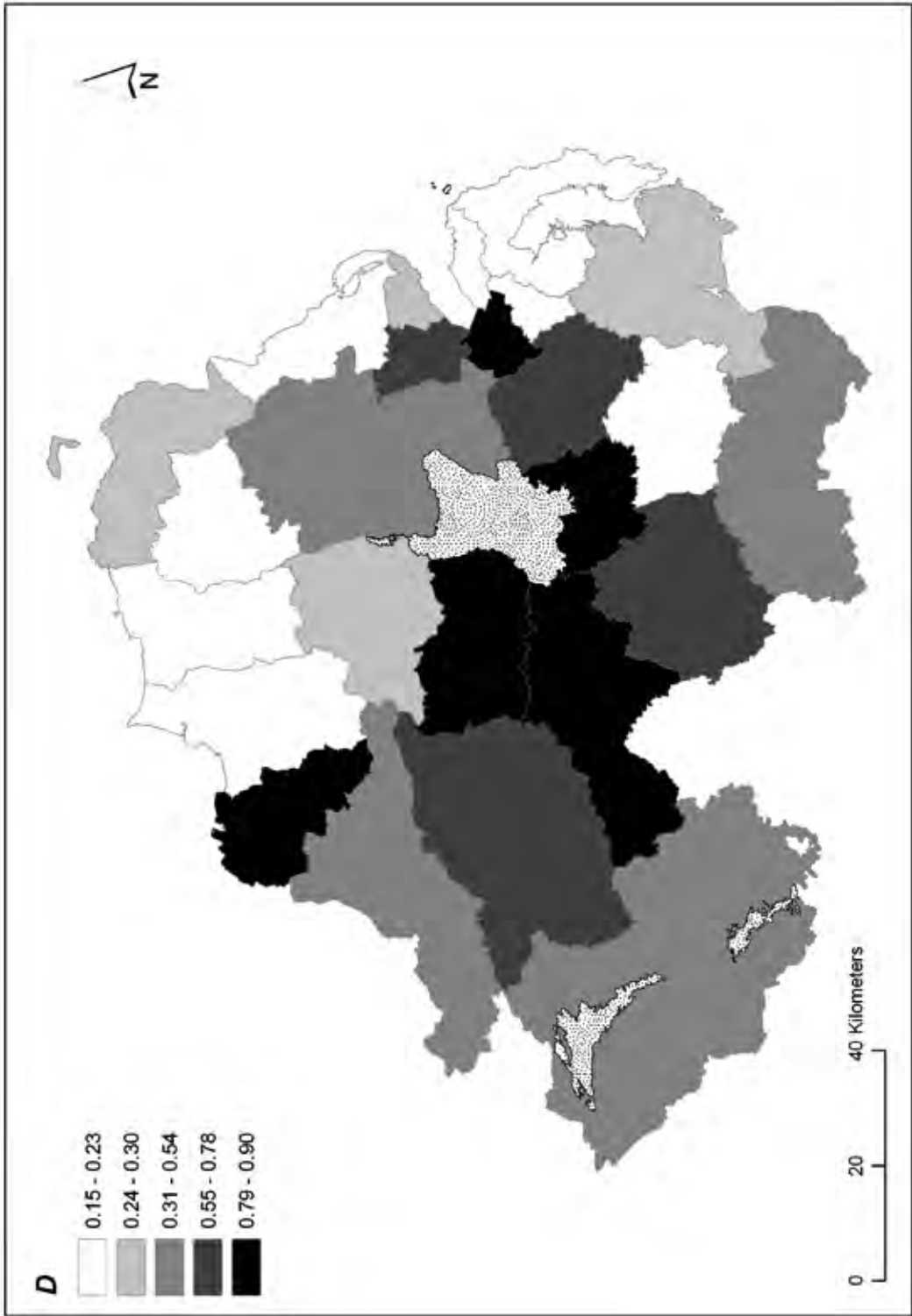
## Omagh

Estate	Persons	Households	Percentage Social Rented	Percentage Private rented	Percentage Catholic (RI)	Percentage Protestant (RI)	Percentage Catholic (C)	Percentage Protestant (C)
Brooke Valley/Lammy	178	56	53.23	4.84	89.89	0.00	92.82	5.52
Castleview/Beechgrove	609	212	66.16	4.55	83.06	5.32	92.43	6.58
Culmore Omagh	473	180	63.54	6.25	89.89	0.00	96.84	2.53
Derry Road	246	107	44.12	5.88	88.48	1.23	94.76	4.03
Deverney	39	16	100.00	0.00	8.11	45.95	21.43	64.29
Hospital Road	723	328	32.93	13.41	3.46	86.86	4.06	95.38
Kelvin Rd/Gallows Hill	603	299	33.65	16.03	73.93	18.15	78.99	19.06
Killyclogher	80	28	41.94	19.35	84.34	12.05	90.12	9.88
Lisanelly/Gortin Rd	322	122	69.35	4.84	45.02	29.58	57.23	37.85
Shandon Park	468	161	38.67	0.00	92.36	1.91	98.49	1.51
Strathroy	621	239	75.60	6.00	85.06	1.95	94.98	3.57
<b>Total</b>	<b>4,362</b>	<b>1,748</b>	<b>51.41</b>	<b>8.54</b>	<b>67.89</b>	<b>20.95</b>	<b>74.37</b>	<b>24.21</b>

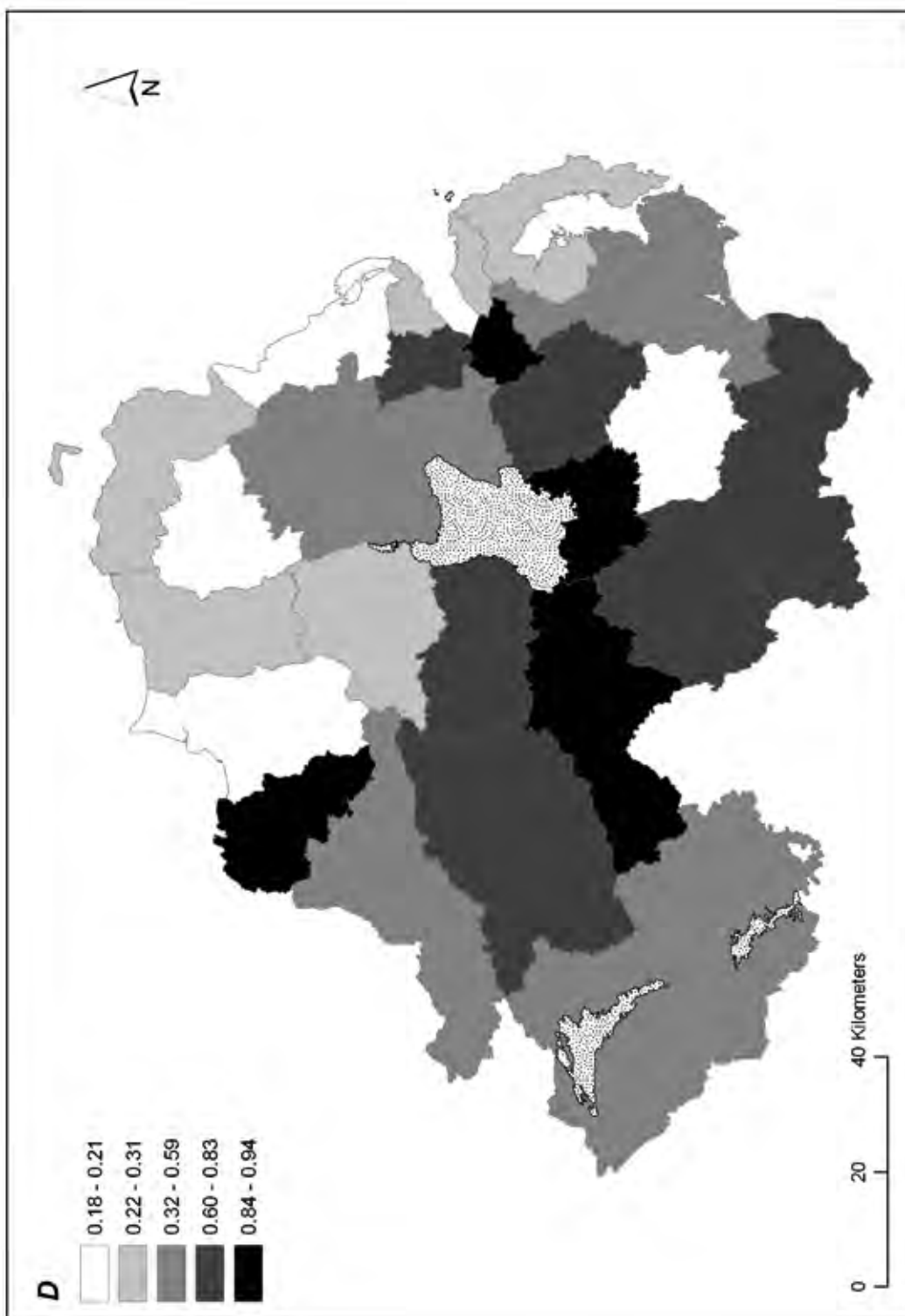
## Strabane

Estate	Persons	Households	Percentage Social Rented	Percentage Private rented	Percentage Catholic (RI)	Percentage Protestant (RI)	Percentage Catholic (C)	Percentage Protestant (C)
Alexander Strabane	37	15	31.58	15.79	64.86	35.14	67.57	32.43
Ballycolman	1,239	405	53.54	6.06	91.07	1.21	99.26	0.49
Bridge St	214	106	51.38	2.75	86.06	3.37	89.86	5.99
Castlemurray	34	14	40.00	0.00	27.03	54.05	38.24	61.76
Finview	37	13	33.33	16.67	35.29	64.71	30.77	61.54
Fountain St	685	216	73.61	0.00	90.99	1.74	98.68	1.32
Lisnafin	1,118	425	48.76	3.71	89.18	5.01	95.38	4.62
Newhouse Melmount	276	75	70.51	0.00	90.77	5.90	92.75	6.16
Springhill Pk Newtownkennedy Lower Newtown.	206	64	61.54	9.23	90.73	0.00	100.00	0.00
<b>Total</b>	<b>3,846</b>	<b>1,333</b>	<b>55.83</b>	<b>4.09</b>	<b>88.83</b>	<b>4.19</b>	<b>95.52</b>	<b>4.01</b>

**Appendix B** Map 1: D (Community background) by District Council

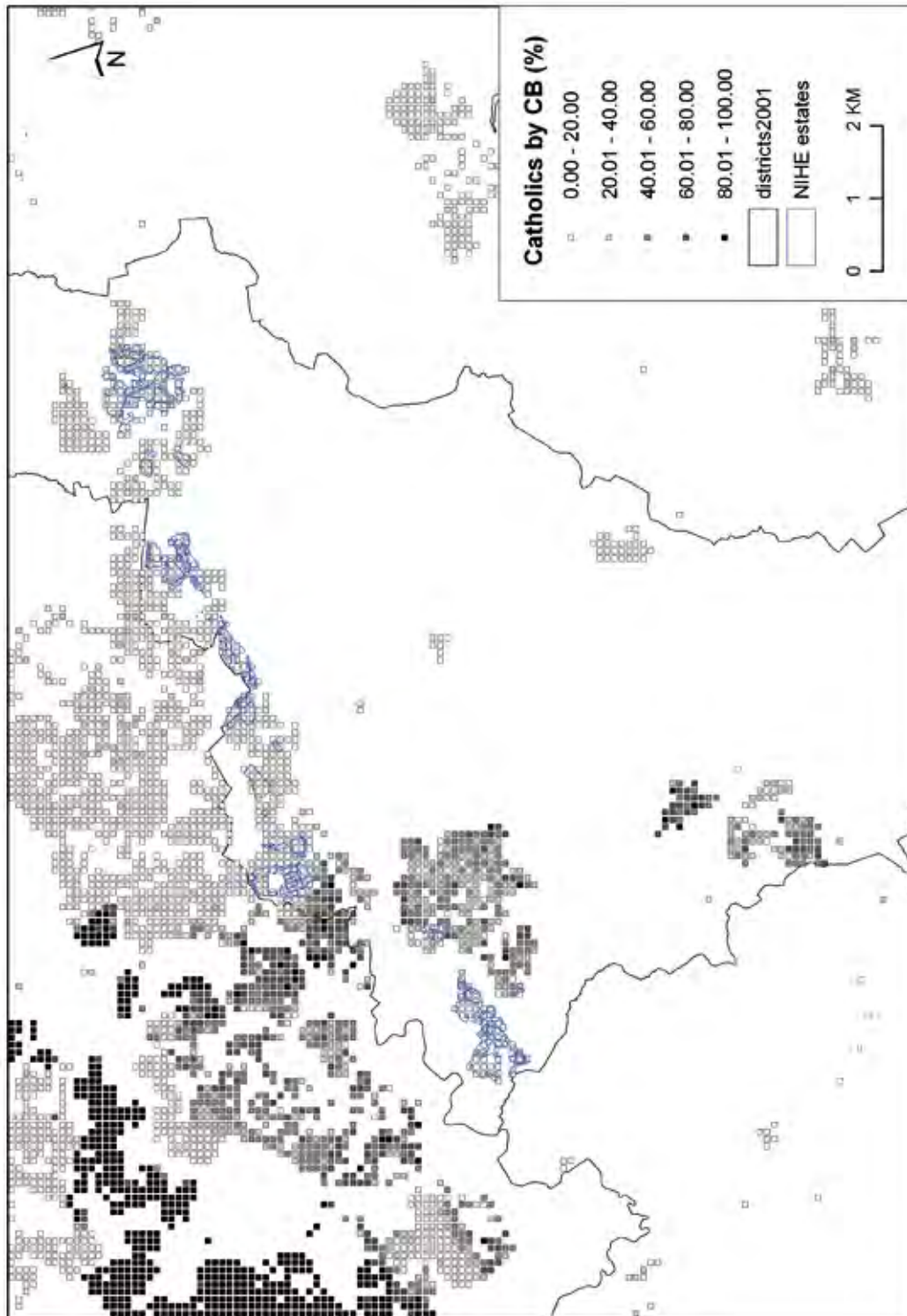


Map 2: D (Religion) by District Council

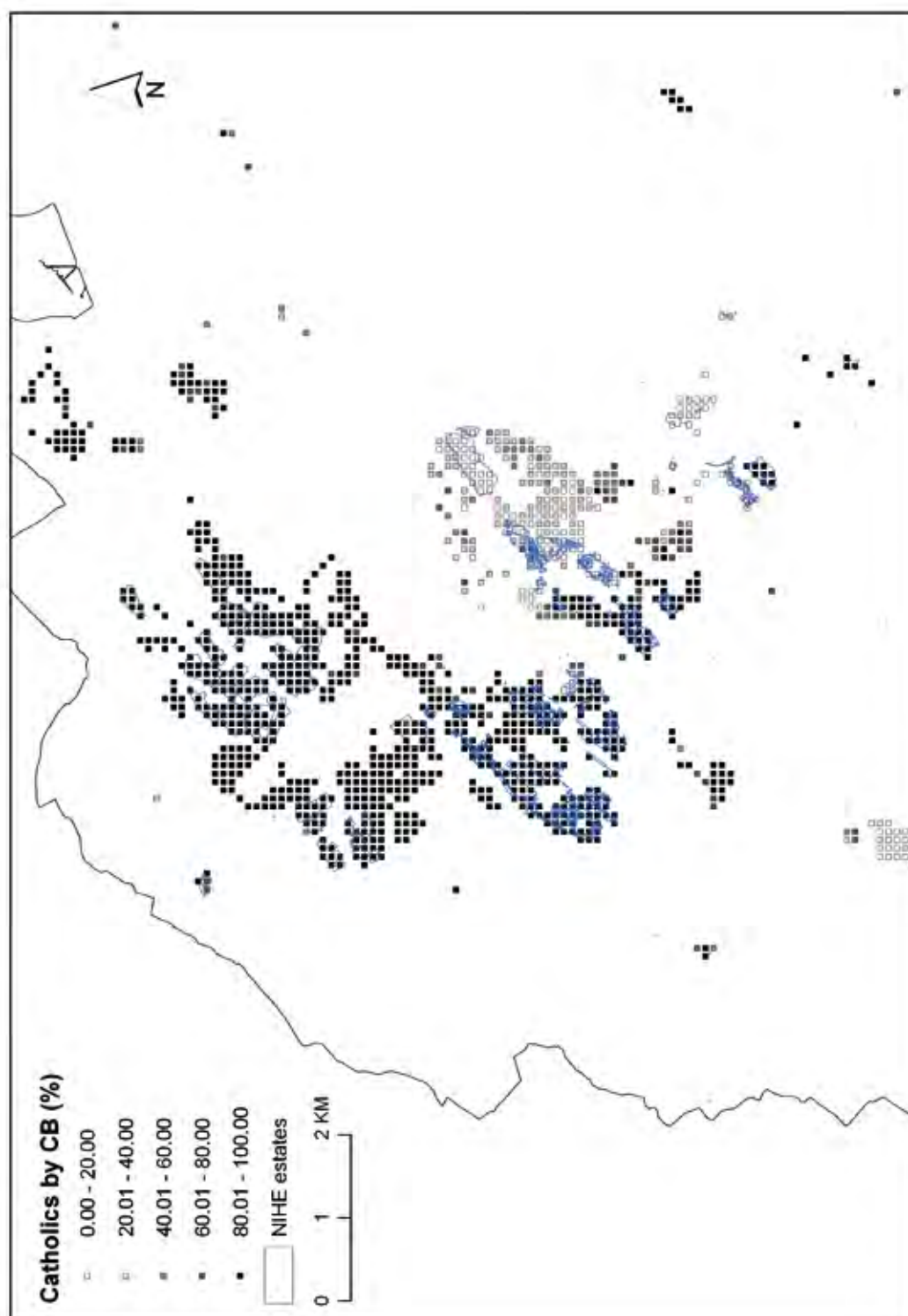




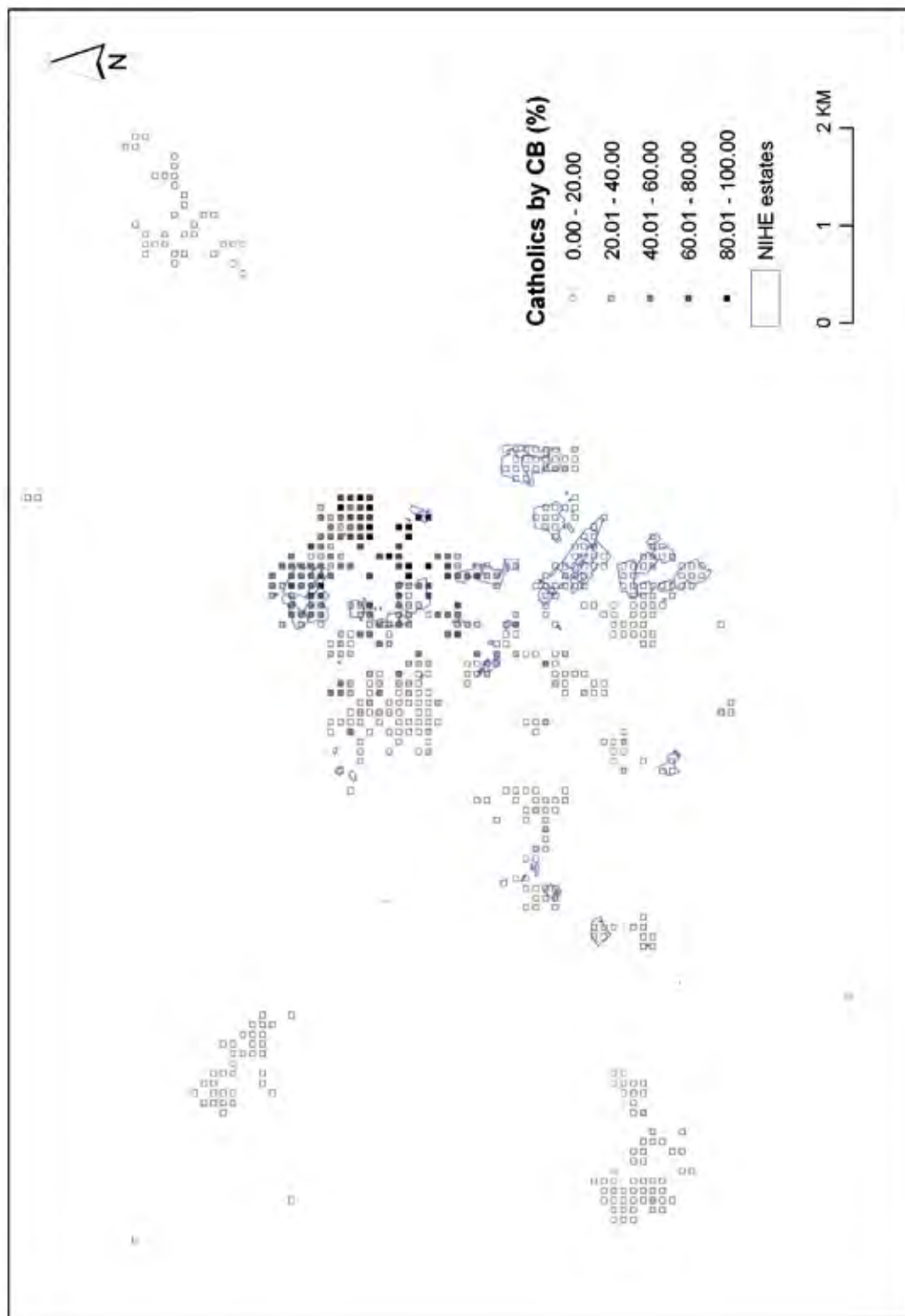
Map 3: NIHE Estates and Underlying Community Background in Castlereach



Map 4: NIHE Estates and Underlying Community Background in Derry

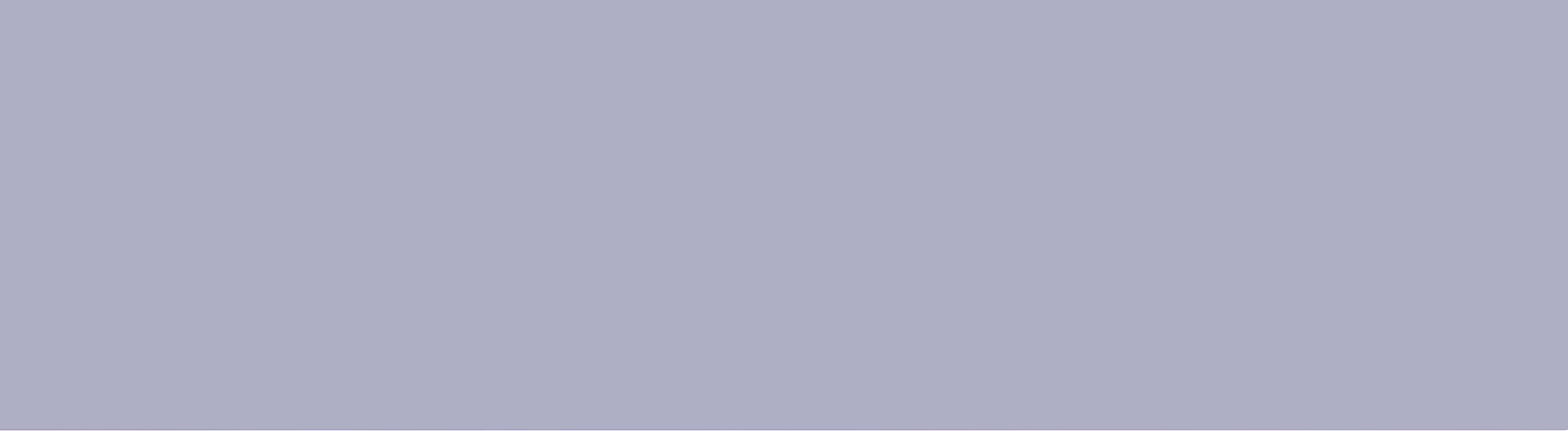


Map 5: NIHE Estates and Underlying Community Background in Ballvmena









June 2009  
[www.nihe.gov.uk](http://www.nihe.gov.uk)

ISBN No 978-1-85694-035-1

**Housing  
Executive**

CS/394/03/09